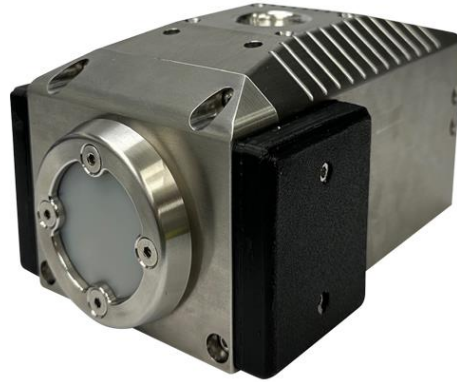




Deepsight HD
(with optional gimbal)



Deepsight Thermal
(with optional dust cover)

KEY FEATURES

- ✓ Available in HD and Thermal variants
- ✓ Integrated Neural Processing Unit (NPU)
- ✓ Supports Edge AI enhanced* real-time analytics and object detection of workers, cables, machinery or other heat sources
- ✓ Daisy-chain multiple cameras using a single cable for ethernet and power
- ✓ Recording capability up to 4 hours
- ✓ Motion detection
- ✓ Frame rate control up to 30FPS
- ✓ Stream mode and Capture mode
- ✓ Adjustable brightness, contrast, sharpness and saturation
- ✓ Ethernet protocols TCP/IP, ICMP, HTTP, DHCP, DNS, NTP, UDP
- ✓ Streaming protocols RTP/UDP, RTP/RTSP/TCP, RTP/UDP Multicast
- ✓ Robust WiFi and low latency streaming
- ✓ Supports ONVIF
- ✓ Supports wide range of encoding formats MJPEG/MPEG4/H264/H265 Compression
- ✓ Fast frame rate of 25Hz
- ✓ Certification IECEx TSA 25.0004X | IECEx ICS 24.0032X

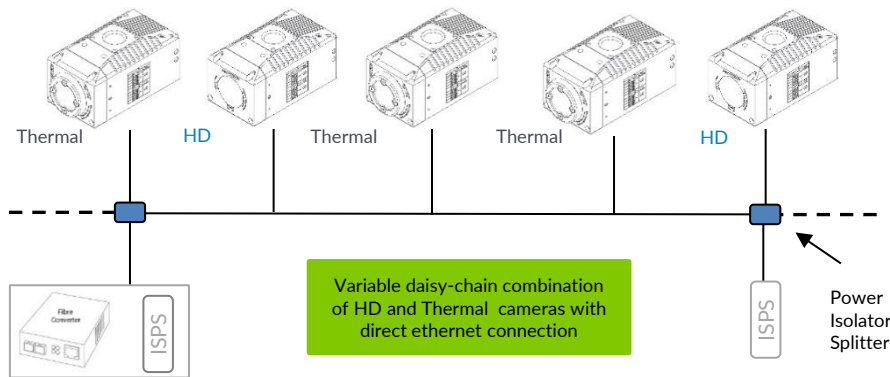
THERMAL FEATURES

- ✓ **Thermal** - High resolution thermal images unaffected by darkness, dust or water sprays (Thermal Camera)
- ✓ **Thermal** - Thermal sensitivity as low as ($\leq 40mK$)

HD FEATURES

- ✓ **HD** - Exceptional low-light performance
- ✓ **HD** - High Resolution Recording (1920 X 1080P)
- ✓ **HD** - Digital Overlap Wide Dynamic Range (DOL WDR)
- ✓ **HD** - 2D/3D Noise Reduction
- ✓ **HD** - Backlit Compensation (BLC)
- ✓ **HD** - Rolling Shutter (Global Shutter available on request)

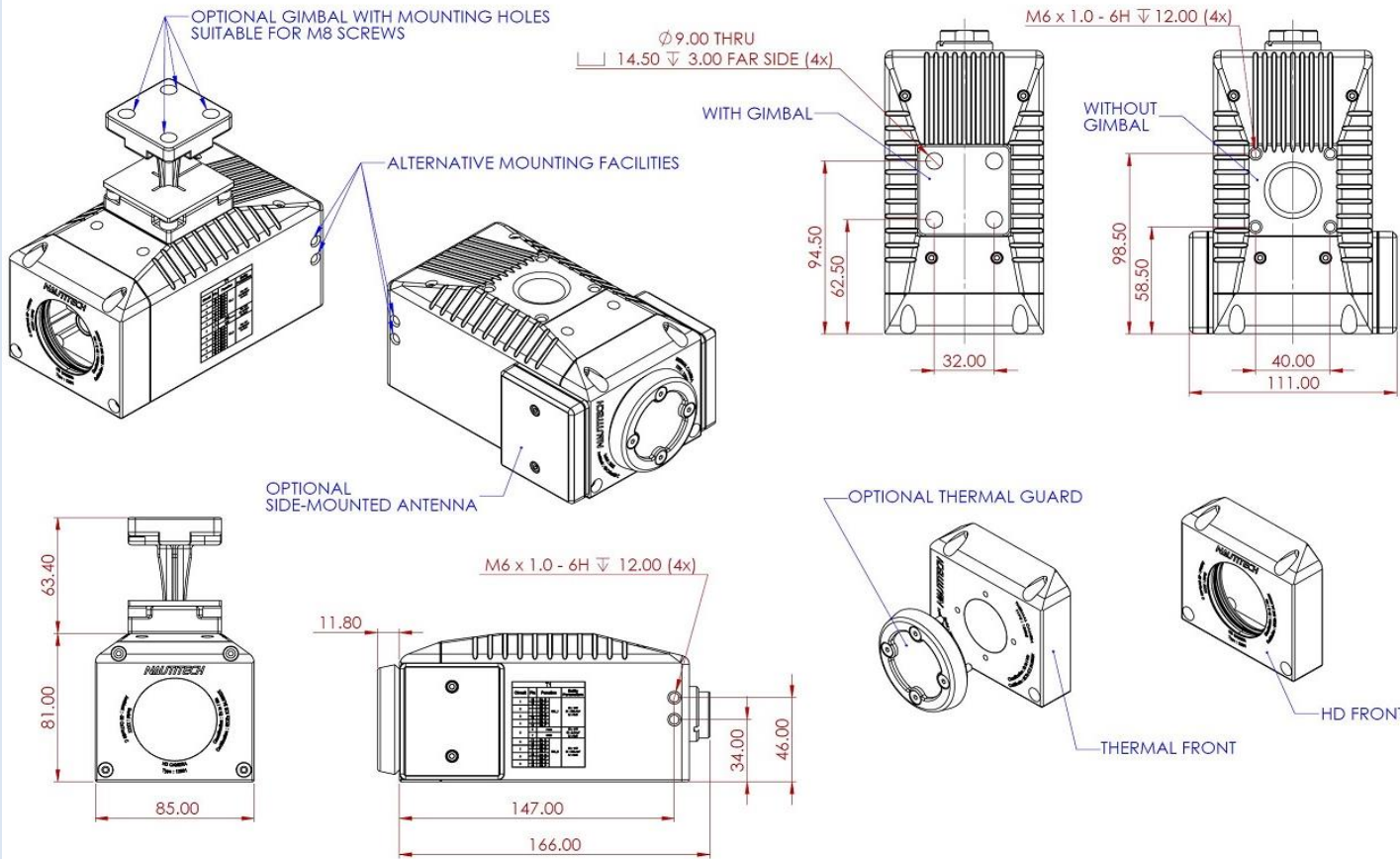
Daisy-chain Intrinsically Safe Thermal and HD Cameras for proactive real-time safety monitoring and predictive maintenance across the entire length of the longwall



*** daisy-chain combination displayed for demonstration purposes only

* AI capabilities are not standard. Software updates required for individual applications





TECHNICAL SPECIFICATIONS

- Dual Video Streams
 - Main stream adjustable from 500Kbps to 32 Mbps (RTSP streaming default 4 Mbps)
 - Sub stream can simultaneously stream at a reduced rate to conserve bandwidth
- Field of View: 10° to 90° (adjustable)
- Replaceable Lens Cover
- Adjustable Mounting Angle
- On-Board Video Recording
- Ambient Temp: -20°C to +60°C
- Protection: Intrinsic Safety “ia”
- Marking: Ex ia I Ma
- Ingress Protection: IP68
- Voltage: 12V



Certified:
IECEX 60079-11:2023 and IECEX 60079-0:2017
Electrical apparatus for explosive gas atmospheres

ORDER INFORMATION

- Part #: CX501-001 CUBEx Deepsight IS HD Camera (with Ethernet, with WiFi)
- Part #: CX501-002 CUBEx Deepsight IS HD Camera (with Ethernet, NO WiFi)
- Part #: CX502-001 CUBEx Deepsight IS Thermal Camera (with Ethernet, with WiFi)
- Part #: CX502-002 CUBEx Deepsight IS Thermal Camera (with Ethernet, NO WiFi)

- Part #: ME5930-2-90-001 Optional gimbal mounting kit
- Part #: ME5930-2-90-002 Optional lens shield

