

NAUTITECH®

HARNESSING TECHNOLOGY TO KEEP MINERS SAFE

**METHANE
MASTER**



Methane Master

CH4 Monitoring and Shutdown



Scan QR Code for
more information

nautitech.com.au

The Nautitech® Methane Master with hybrid snout is designed and tested for STATIC and DYNAMIC conditions in underground mining where there are sudden shocks in temperature and/or humidity. The Methane Master monitors and measures the concentration of methane in hazardous environments and is the leading shut-down and start-up system in Australia.

Manual and automated time response and telemetry testing to AS2290.3.2018 standards

Shock resistant to sudden changes in temperature or humidity



DISPLAY

Rugged Hawkeye display with full colour graphics

FITTING FOR SENSOR

With anti-condensation heating

RAPIDSENSE I.S. SENSOR HEAD

For continuous methane monitoring (with software upgrade)

SINTERED FILTER KIT

For increased Ingress Protection

HYBRID SNOOT

Designed for quick removal for cleaning

KEY FEATURES

- ✓ Shock resistant to sudden changes in temperature or humidity
- ✓ Manual and automated time response and telemetry testing to AS2290.3 2018 standards
- ✓ Intrinsically Safe sensor
- ✓ Not susceptible to "poisoning"
- ✓ Infrared sensing technology
- ✓ Fast warmup times
- ✓ Rugged stainless-steel construction
- ✓ Robust ingress protection

STANDARD SYSTEM

MEDIUM FLAMEPROOF ENCLOSURE

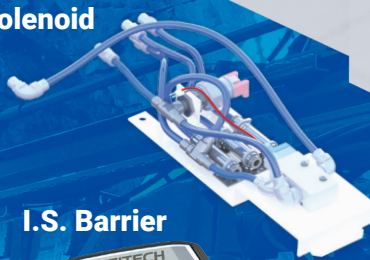


Battery Charger

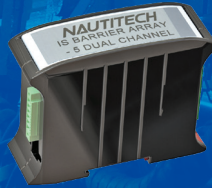


7.2V Battery with I.S. and Non I.S. Outputs

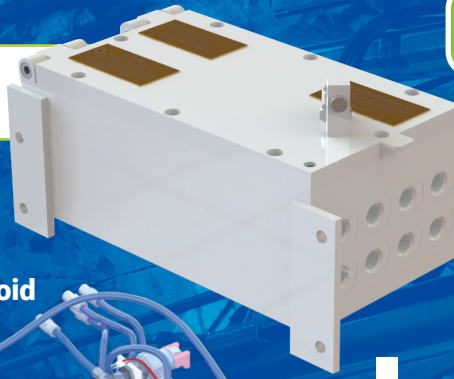
Air Solenoid



I.S. Barrier



Flame Trap

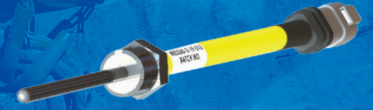


CUSTOMISE YOUR SYSTEM

OPTIONS

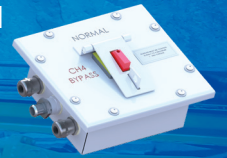
Temperature Sensors

For On-Engine and/or remote sensing (0-125°C)



Deputy Bypass Switch

For authorised override of CH4 sensor



DATA LOGGING AND ANALYTICS

- Unit for data logging on vehicle CAN networks
- Collect and buffer data from critical vehicle components
- Transfer data to surface via mine network as vehicle passes through WiFi Access Points (WAP)
- Create a dashboard of machine analytics



PROFILER SPITFIRE



Profiler

Antenna



Connectors

SYSTEM APPLICATIONS

The Methane Master is ideal for a wide range of underground mining applications including Diesel and Electric Personnel Transporters, LHDs, Brumbys, C9 Diesel Machines, Shotcreters and Electric Mules



Grader



Dozer



Flitmate



Loader

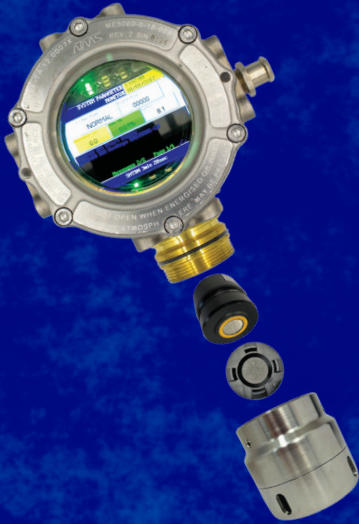


C9 Diesel



Man Transporter

Methane Master With Hybrid Snout Hawkeye Display Ex dia LCD



SYSTEM VARIANTS

BASIC System
(Key Components)
CT118501

ME5350-2-99-260 - Hawkeye Display (Basic)
ME5070-2-19-009 - RapidSense Ex dia CH4 Sensor
ME5070-2-99-151 - 7.2V Battery Pack (w/RTC)
PL118504 - Charger Module
PL118534 - Air Solenoid Valve
PL118541 - Flameproof Main Enclosure (White)
ME5060-2-99-016 - Flameproof Display Enclosure
ME5070-2-99-112 - Sensor Assembly
[ME5350-2-26-008 - Magnetic Pencil \(triple magnet\)](#)
[ME5070-2-07-019 - Hybrid Calibration Cap](#)
[ME5070-2-90-159 - Hybrid Snout](#)
[ME5070-2-24-005 - Sintered filter for Hybrid Snout](#)
[SW507001 - Software Upgrade 2.0.2](#)

TORQUE System
(Variations to BASIC Components)
ME5260-2-99-196

E5350-2-99-263 - Hawkeye Display (Torque)
PL118594 - Torque Charger Module
ME5070-2-99-462 - Deputy Bypass Junction Box (Torque)
ME5790-2-99-479 - IS Barrier Array
ME5260-2-19-018/019/020/021/022 - RTDs

JUG-A-O System
(Variations to BASIC Components)
CT118513

ME5350-2-99-262 - Hawkeye Display (JUG-A-O)
PL118514 - Juganaut Charger Module
PL118542 - Flameproof Enclosure (Black)
ME5070-2-99-461 - Deputy Bypass Junction Box
PL002900 - Scrubber RTD
CT118509 - Super Charger RTD
ME5790-2-99-479 - IS Barrier Array

Engine Management System (C9)
ON ENGINE KIT

CT500130 - Injectors
CT500131 - Heui Pump
CT500114 - Air Switch (5-7mA)
CT500105 - Air Switch ON/OFF
CT500104 - Speed Sensor
CT500115/116 - Temperature Sensors (Intake/
Coolant)
CT5001-11-01-01 - Boost Pressure Sensor
CT5001-12-01-02 - Fuel Pressure Sensor
CT5001-13-01-02 - Oil Pressure Sensor
CT5001-24-02-03 - Injection Pressure Sensor

Engine Management System (C9)
OFF ENGINE KIT

ME5350-2-99-266 - Hawkeye Display (C9)
ME5070-2-99-153 - 12V IS Battery
CT500142-DL-02 - PMU
CT500126-02 - ECU
CT500516 - IS Power Supply
Type 5002 - CAN Guages
ME5230-2-99-061 - Large Enclosure

• *C9 system uses the 5230 large enclosure

Vehicle Maintenance



Temperature



Battery



Engine

COMPLEMENTARY ADD ON

The Spitfire® Data Master MR (Mobile Reports) is the FIRST connectivity and data visualisation tool for underground diesel machines in Australia. It works seamlessly with the Methane Master.

For the person in charge of scheduling and maintenance of underground diesel vehicles, having critical vehicle data is invaluable for a proactive approach to operational efficiency and incident investigation.

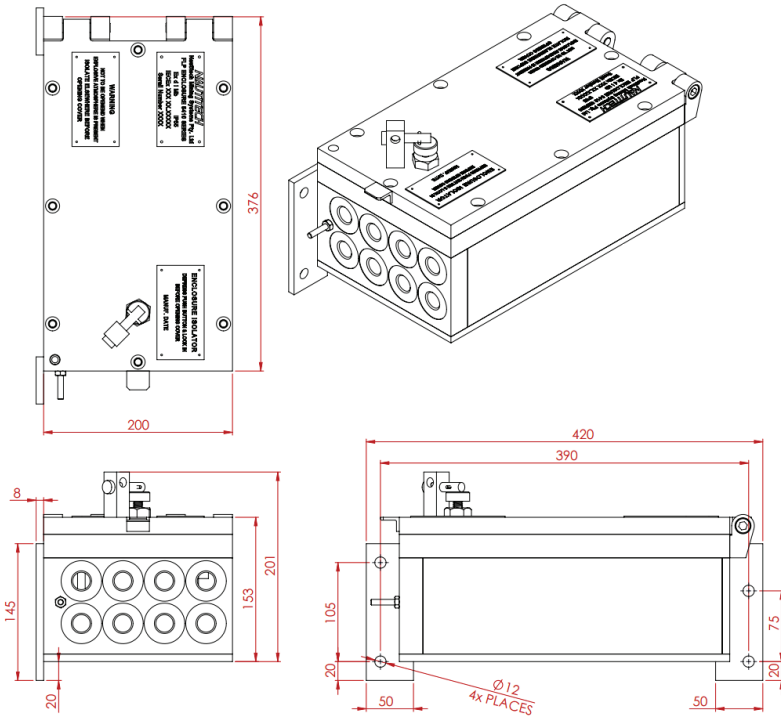
Data is collected from sensors on diesel RTVs as they come within Wi-Fi range. This data is analysed and presented in a visual format to support many operational outcomes.



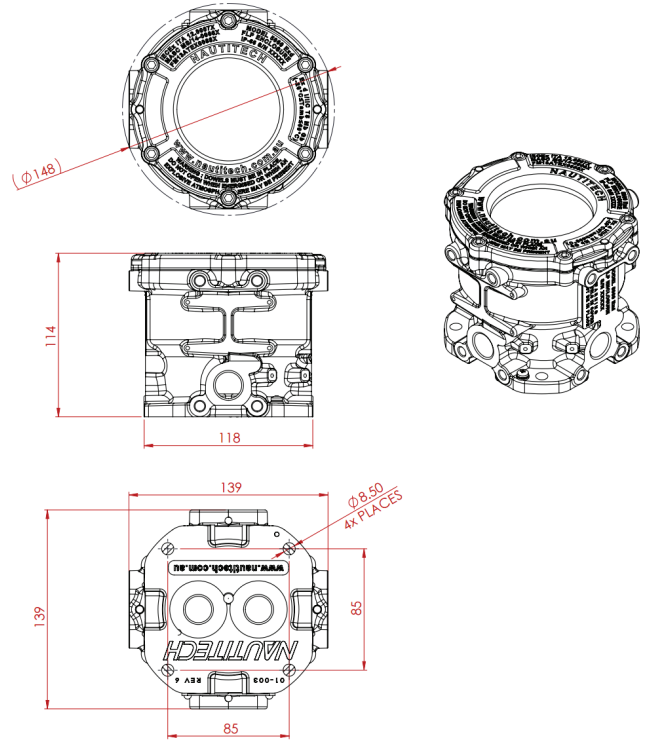
Scan QR Code for info about the DataMaster

TECHNICAL SPECIFICATIONS

Medium Ex d Enclosure



3½ Display



ENVIRONMENTAL SPECIFICATIONS

Range Methane	Accuracy	Operating Voltage Range	Operating Temperature Range	Humidity
0-5% v/v	0.1% CH ₄	7-16VDC	-20°C to +60°C	0-95% non-condensing

CERTIFICATION

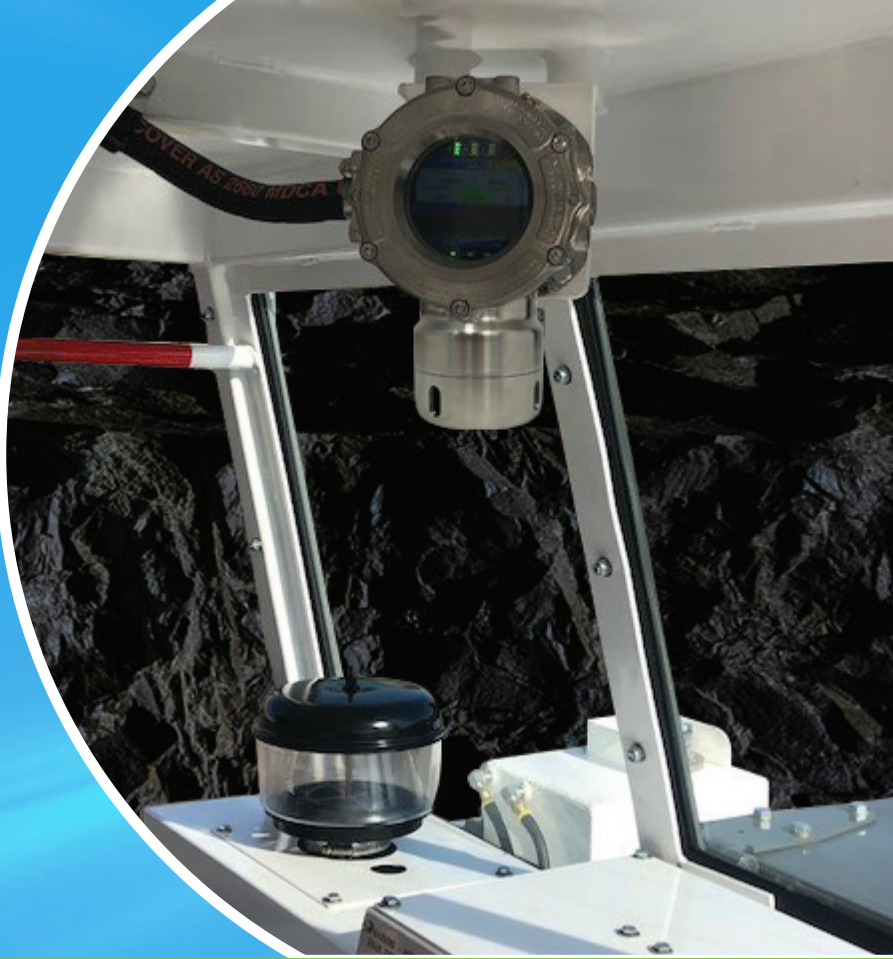


NAUTITECH®

HARNESSING TECHNOLOGY TO KEEP MINERS SAFE

NAUTITECH® is an Original Technology Manufacturer (OTM), and global provider of **smart electronic** and **software** solutions for OEMs and mine sites in underground mining.

We design and manufacture equipment that delivers **Communications** and **Visibility**, supports **Automation**, and provides a platform for **Asset and Condition Monitoring** of underground equipment. Our **data analytics** software can help detect safety risks and gain intelligence for improved mining operations.



South Africa

Middelburg, Mpumulanaga
South Africa

+ 27 78 800 2589

sales_za@nautitech.com.au



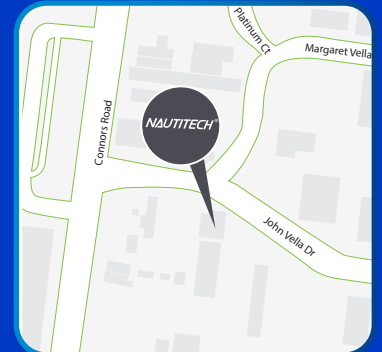
New South Wales

3/9 Packard Avenue
Castle Hill, NSW 2154

+ 61 2 9899 6857

+ 61 417 711 018

sales@nautitech.com.au



Queensland

14 John Vella Drive
Paget, QLD 4740

+ 61 7 4911 4171

+ 61 400 268 755

sales@nautitech.com.au

Scan QR Code to discover our range of products and services

