

Passionate About Innovation

NAUTITECH® is an Australian provider of smart electronic and electrical solutions for OEMs and mine sites in the underground mining industry. We design and manufacture equipment that delivers **Communications** and **Visibility**, supports **Automation**, and provides a platform for **Asset and Condition Monitoring** of underground equipment.

Our core products include **Methane Monitoring** and **Shutdown** systems, **Underground Communications**, **Thermal** and **HD Cameras**, **IS Lights** and **Displays**. We collaborate, test, and research to continually improve what we deliver to our customers.

Service & Support

- ✓ AS3800 and IECEx service facility
- ✓ NATA certified calibration lab
- ✓ Field installation, maintenance & training
- ✓ Audits & compliance checks of explosion proof equipment including diesel machines
- ✓ 12 months warranty on new parts

We offer full product life cycle support

The reliability and quality of NAUTITECH® solutions have been proven to provide a competitive advantage.



NAUTITECH®
DEVOTED TO SOLUTIONS IN HAZARDOUS AREAS

METHANE MASTER



Leading shut-down & start up system in Australia

Designed to monitor and provide indication of the concentration of methane in hazardous environments. Applications include safe start-up or shut-down on mobile plant such as **Diesel Powered Vehicles** and other mining machinery.



- ✓ Intrinsically Safe sensor
- ✓ Shock resistant to Temperature and Humidity
- ✓ Rugged stainless steel construction
- ✓ Robust ingress protection
- ✓ Infrared sensing technology
- ✓ Fast warm up times
- ✓ Not susceptible to 'poisoning'
- ✓ Manual and automated time response and telemetry testing to AS2290.3.2018 standards



New South Wales

3/9 Packard Avenue
Castle Hill, NSW 2154

+ 61 2 9899 6857
sales@nautitech.com.au



Queensland

14 John Vella Drive
Paget, QLD 4740

+ 61 7 4911 4171
+ 61 488 221 031
sales@nautitech.com.au



South Africa

Middelburg, Mpumulanaga
South Africa

+ 27 78 800 2589
sales_za@nautitech.com.au

Full 1-Year Warranty

STANDARD COMPONENTS

Manual and automated time response and telemetry testing to AS2290.3.2018 standards



DISPLAY
Rugged Hawkeye display with full colour graphics

FITTING FOR SENSOR
With anti-condensation heating

RAPIDSENSE I.S. SENSOR HEAD
For continuous methane monitoring

SINTERED FILTER KIT
For increased Ingress Protection

SNOUT
Designed for quick removal for cleaning



MEDIUM SYSTEM

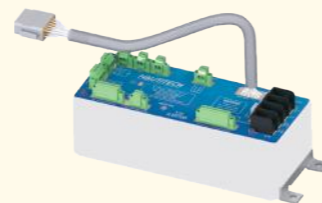
MEDIUM FLAMEPROOF ENCLOSURE



Battery Charger



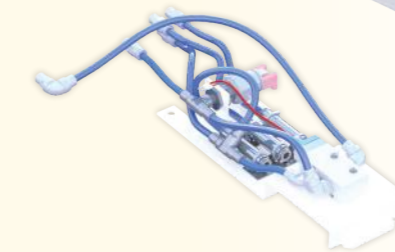
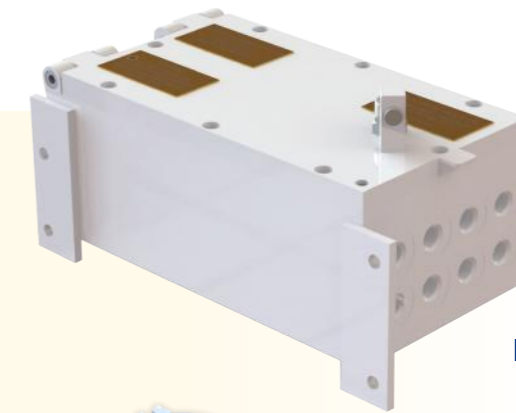
Flame Trap



7.2V Battery with I.S. and Non I.S. Outputs



I.S. Barrier



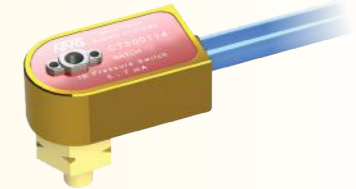
Air Solenoid

OPTIONS

Deputy Bypass Switch
For authorised override of CH4 sensor



Pressure Switches
Customisable to any defined pressure range



Pressure Sensors
Low pressure (0-100kpa) to high pressure (0-3500kpa)



Switches
Allows for customisable switching



Can Gauges
Pedal position, linear floats, switch based floats, 6-switch Can Gauge, 3-axis Gyro



Temperature Sensors
For On-Engine and/or remote sensing (0-125°C)



LARGE SYSTEM

LARGE FLAMEPROOF ENCLOSURE



PMU: Power Management Unit



12V Battery with I.S. and Non I.S. Outputs



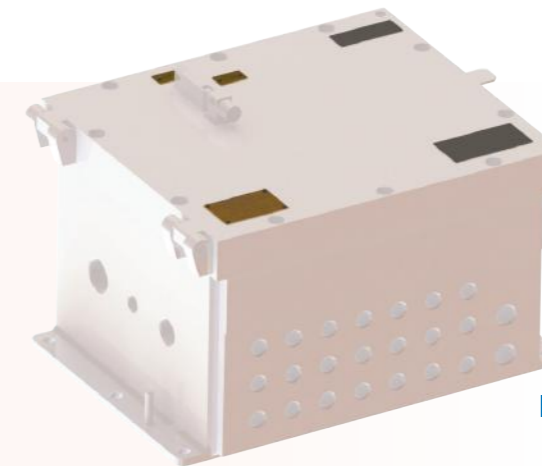
Flame Trap



ECU: Engine Conditioning Unit



I.S. Power Supply



Air Solenoid

Environmental Specifications

Range Methane	Accuracy	Operating Voltage Range	Operating Temperature Range	Humidity
0-5% v/v	0.1% CH4	7-16VDC	-20°C to +60°C	0-95% non-condensing

Certifications

